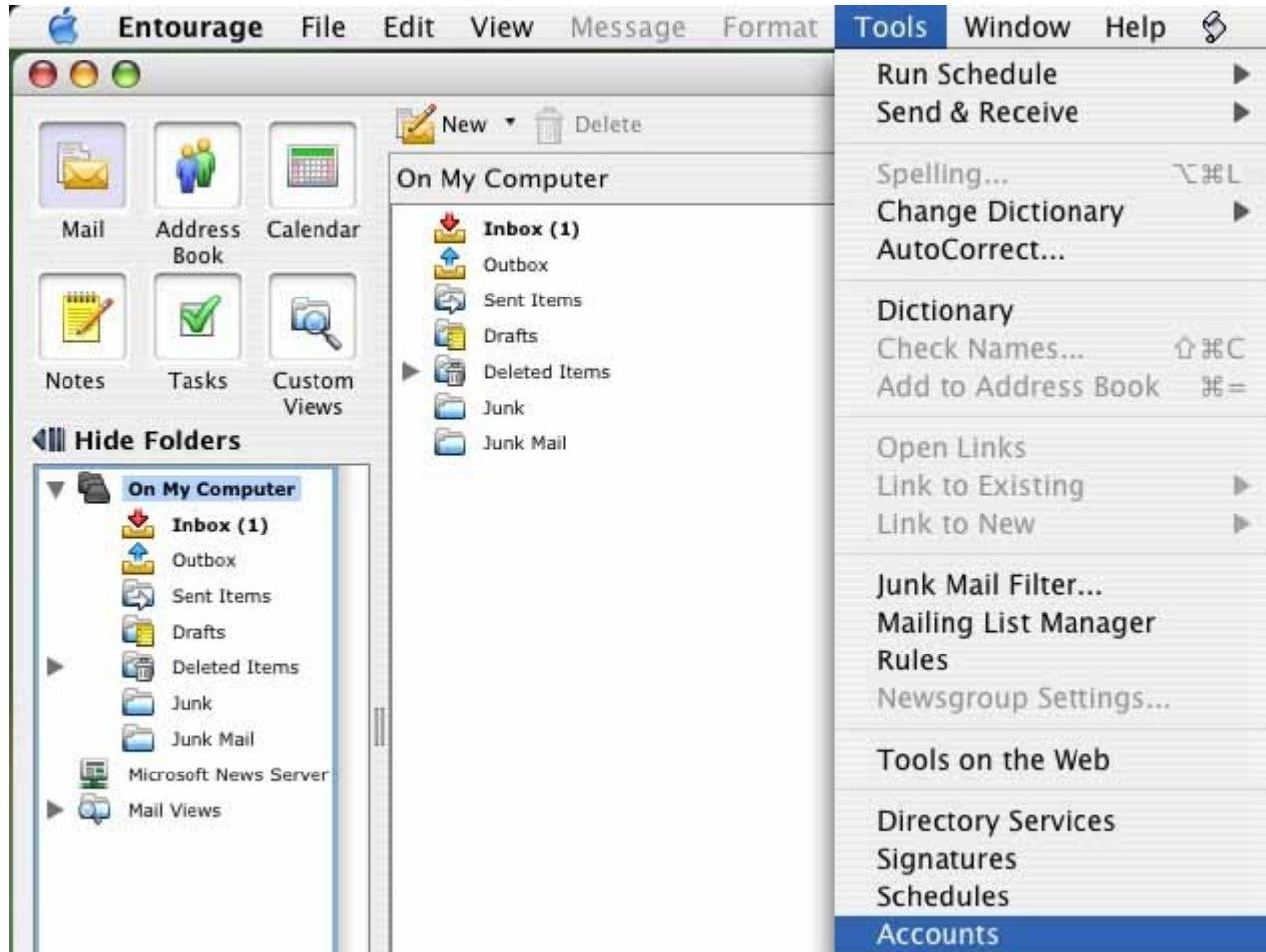


Entourage Mac OS X

Click on the *Tools* menu and select *Accounts*



When the **Account Setup Assistant** window appears select **Configure account manually**

The **New Account** window will appear.

Set the **Account type** to **POP** and click **OK**

On the **Account Settings** tab enter the information as it appears in the example below.

Edit Account

Account Settings Options

Account name:

Include this account in my "Send & Receive All" schedule

Personal information

Name:

E-mail address:

Receiving mail

Account ID:

POP server:

Password:

Save password in my Mac OS keychain

[Click here for advanced receiving options](#)

Sending mail

SMTP server:

[Click here for advanced sending options](#)

Click OK