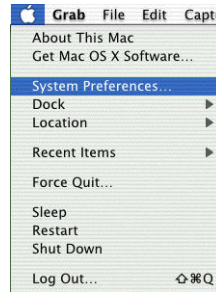


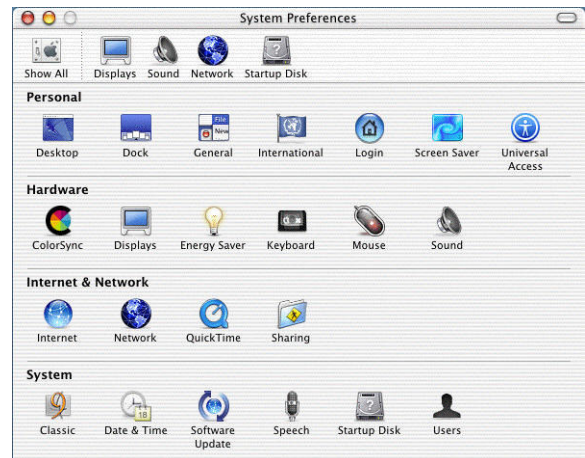


## Mac OS X PPPoE Configuration for Netband Broadband users

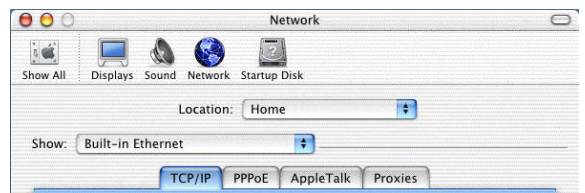
1. Double click **System Preferences**



2. Double click **Network**



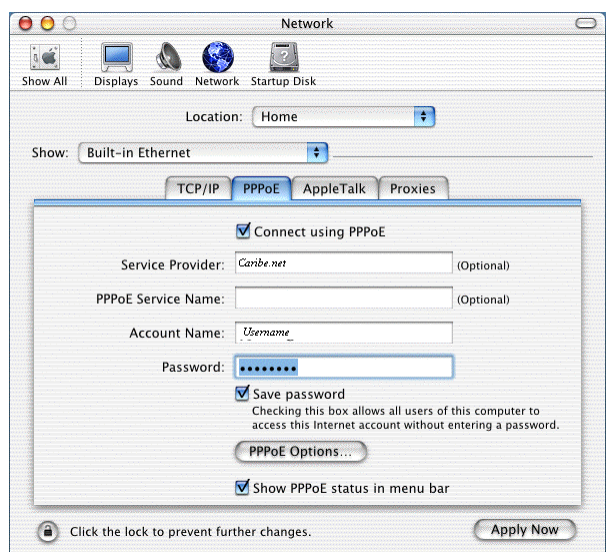
3. Click on drop down **Show** menu , and select your Ethernet device (usually **Built-in Ethernet**). Then click on the **PPPoE** tab.



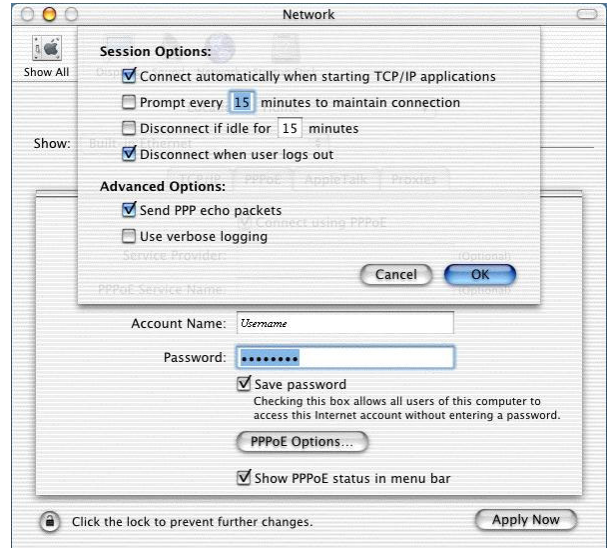
4. In the PPPoE tab, check **Connect using PPPoE**. Then, enter the following:

Service Provider: *Caribe.Net*  
Account Name: *your username*  
Password: *your password*

Check **Save Password** and check **Show PPPoE status in menu bar**. Then click **PPPoE Options**.



- Complete the PPPoE Options screen as shown in the image to your right. Press **OK**. Then press **Apply Now** to save you settings.



- Click on the **TCP/IP** tab. In the **Configure** dropdown menu, select **Using PPP**. Then enter the following:

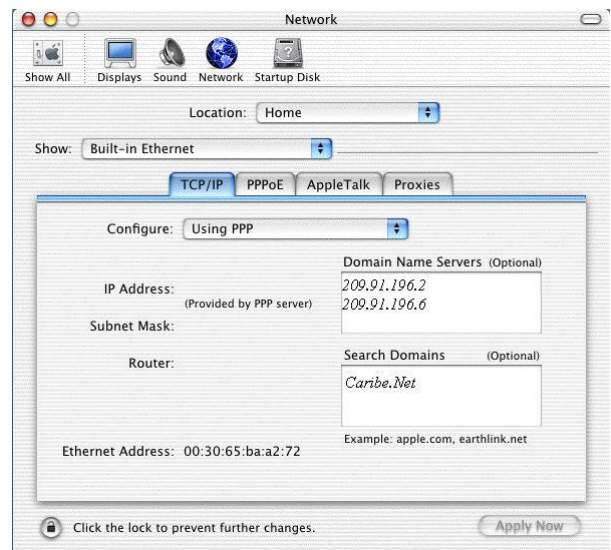
Under **Domain Name Servers**, enter the following:

*209.91.196.2*

*209.91.196.6*

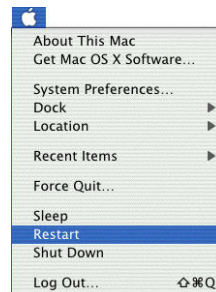
Under **Search Domains**, enter *Caribe.Net*

Then click the **Apply Now** button.



- Close the **Network** window to save your changes.

- From the Apple menu bar, select **Restart**.

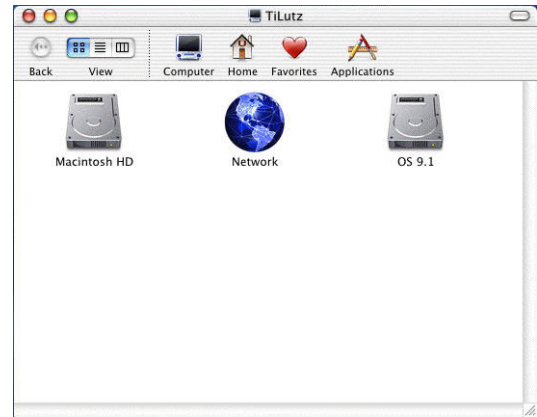


## To manually connect using PPPoE in Mac OS X

1. Click the Finder icon.



2. Click the **Applications** icon in the menú bar.



3. Double click the **Internet Connect** icon.



4. Then, from the **Configuration** drop down menu select **Built-In Ethernet**. Enter your password (if necessary) and press **Connect**.

