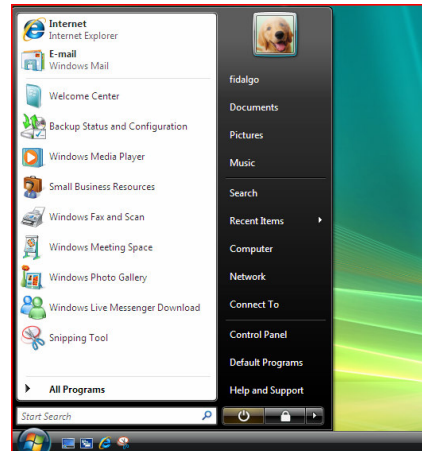


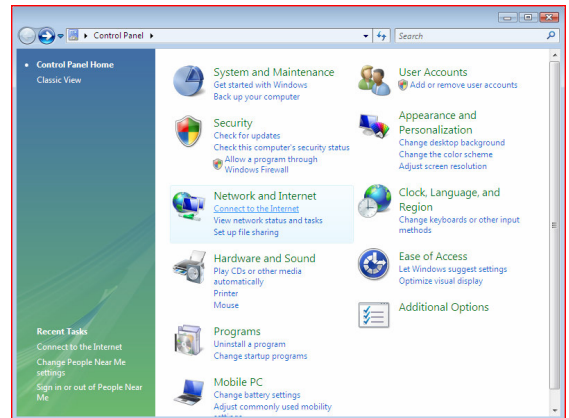
Windows Vista PPPoE Configuration for Netband Broadband Users

Once your Netband equipment has been installed, please follow these instructions to configure your computer.

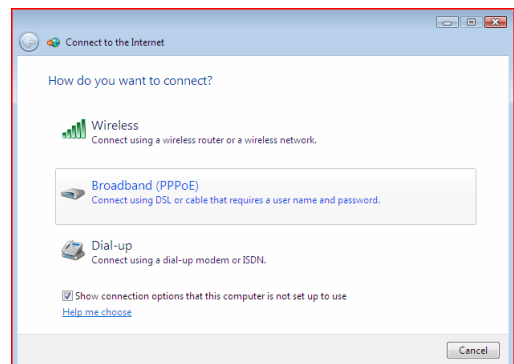
1. Go to the *Control Panel* from the **Start Menu**



2. Click on "Connect to the Internet".

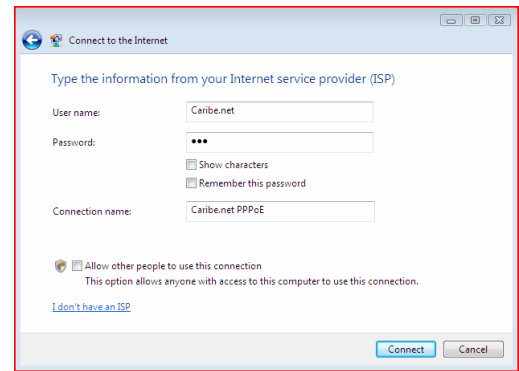


3. Click on "Broadband (PPPoE)"

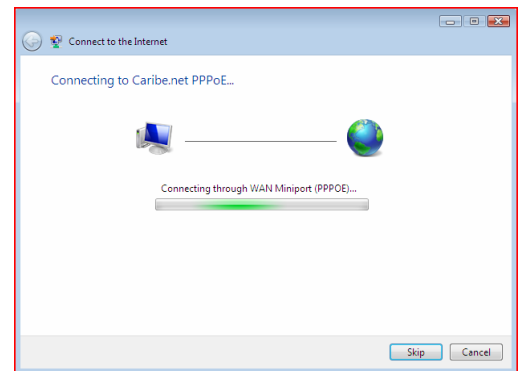


4. Type in the following information for setup
 - a. User name: enter your Caribe.Net username
 - b. Password: enter your Caribe.Net password
 - c. Connection name: enter *Caribe.Net PPPoE*

Then click **Connect**.



5. You will see it dialing the connection. Just let it go through its routine



6. Click **Close** here to finish setting up you connection before you connect to the Internet.

