

## Windows XP PPPoE Configuration



1. Open the **Start** menu Go to  
-> **Connect To** then Open  
**Show all connections**

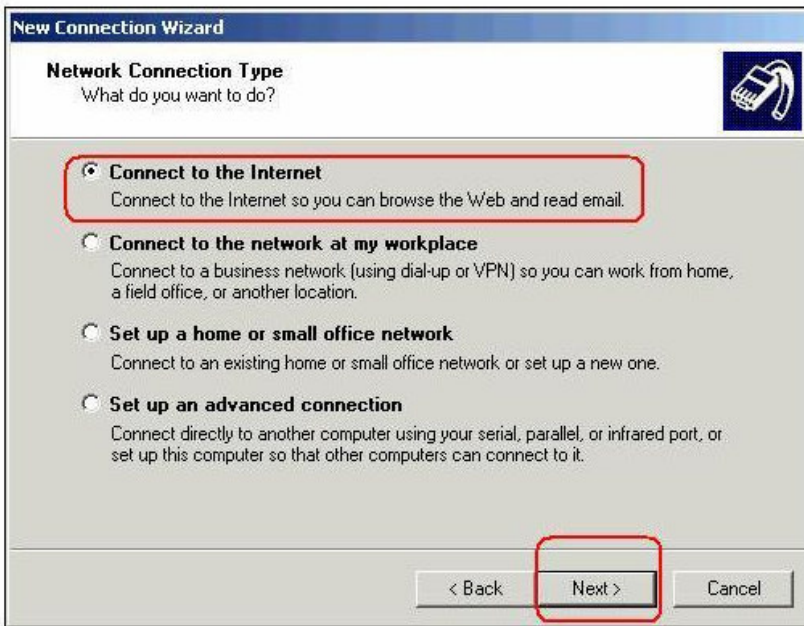


2. Click the **Create a new connection** link.

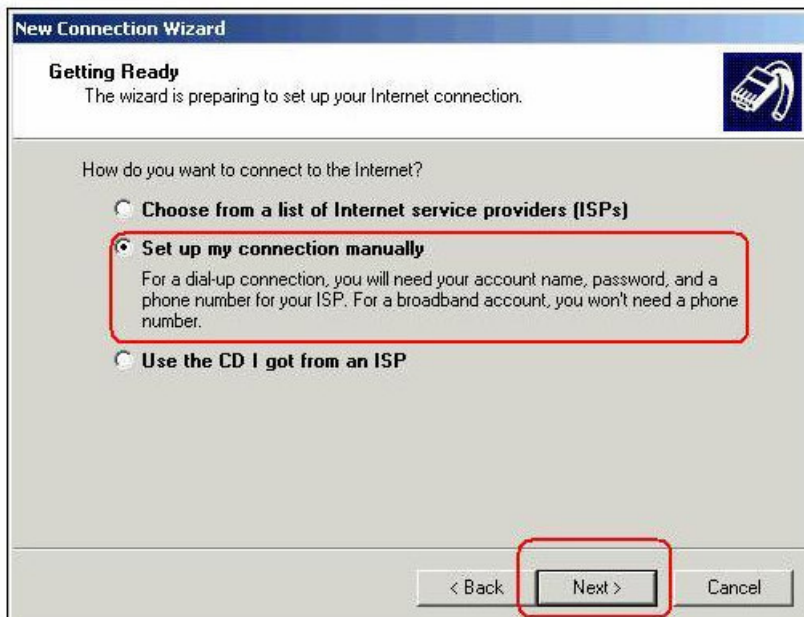


3. The **New Connection Wizard** window should appear.

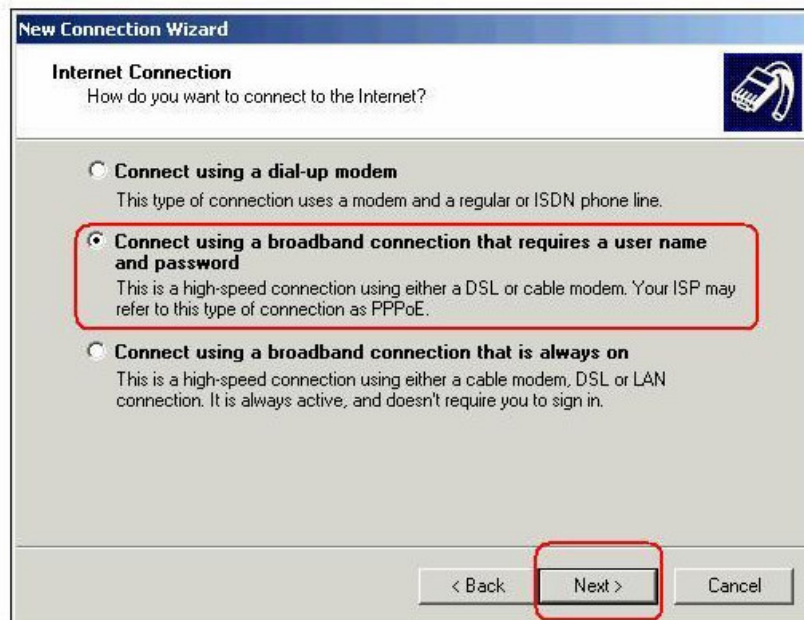
In the **Welcome to the New Connection Wizard** window, click **Next**.



4. Select the **Connect to the Internet** option. Click **Next**.

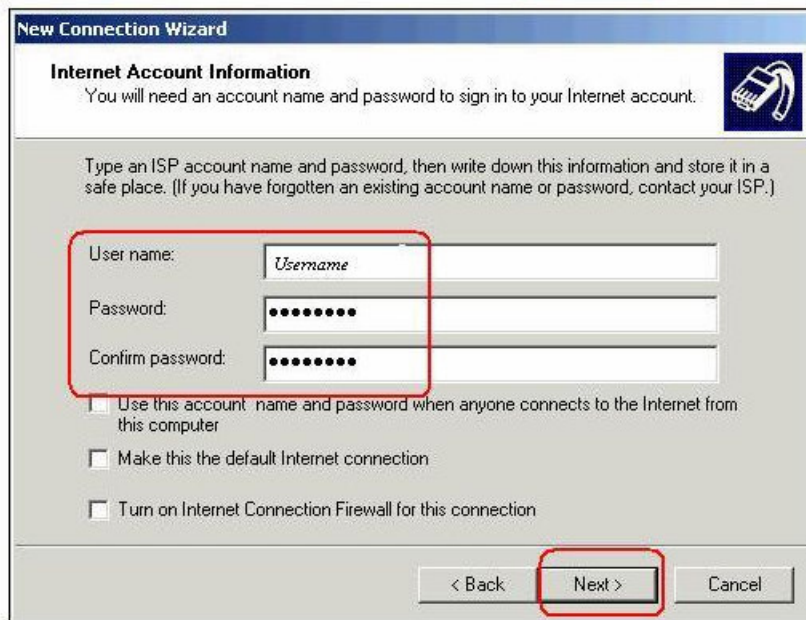


5. Select the **Set up my connection manually** option. Click **Next**.



6. Select the **Connect using a broadband connection that requires a user name and password** option. (Note that it does mention PPPoE), Click **Next**

7. In the **ISP Name** box enter the name of this configuration e.g. *Caribe.Net*  
This field is only a label so spelling is not important. Click **Next**.



8. Make sure the **User name**, **password** and **Confirm password** boxes had been entered your Onebb login account.

There are three small boxes at the foot of the **Internet Account Information** window. Whether you use these options or not is down to your own preference.

Click **Next**.



9. Click the **Connect** button. A connection should be established between your computer and the Internet.